



# GAT MONTHLY MEMBERSHIP PROGRESS REPORT

Results as of: 3/31/2022

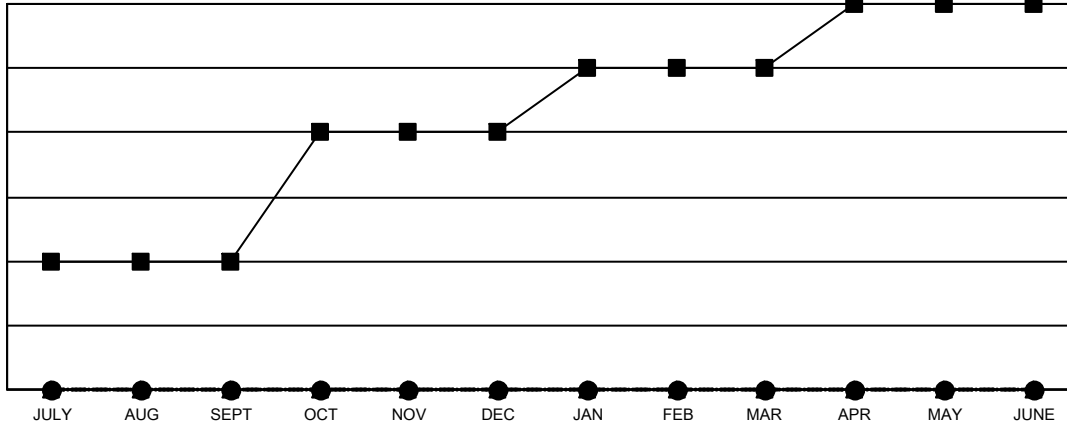
Multiple District 3

LOCATION: OKLAHOMA

Clubs			
RESULTS FOR 2021-2022			
QUARTER	NEW CLUB GOAL	NEW CLUBS	DROPPED CLUBS
JULY/AUG/SEPT	2	0	1
OCT/NOV/DEC	2	0	2
JAN/FEB/MAR	1	0	1
APR/MAY/JUNE	1	0	0

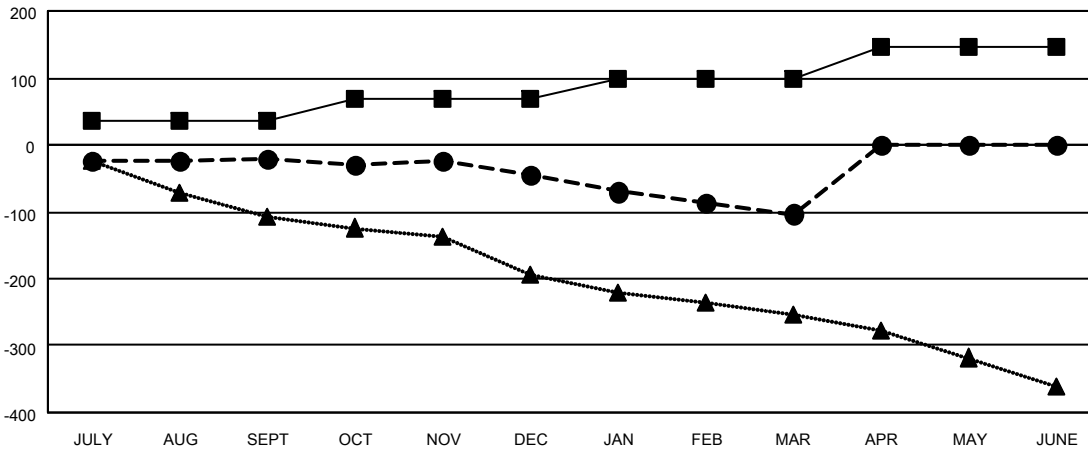
Members			
RESULTS FOR 2021-2022			
QUARTER	MEMBER GROWTH NET GOAL	MEMBER GROWTH ACTUAL	DROPPED MEMBERS ACTUAL (including transfers)
JULY/AUG/SEPT	35	78	83
OCT/NOV/DEC	35	78	99
JAN/FEB/MAR	28	103	133
APR/MAY/JUNE	48	0	0

GOALS AND ACTUAL NEW CLUBS CUMULATIVE



- CURRENT YEAR GOALS FOR NEW CLUBS
- CURRENT YEAR ACTUAL NEW CLUBS
- ▲- LAST YEAR ACTUAL NEW CLUBS

GOALS AND ACTUAL MEMBERS CUMULATIVE



- MEMBER GROWTH NET GOAL
- MEMBER GROWTH ACTUAL
- ▲- LAST YEAR MEMBERSHIP ACTUAL

DROPPED CLUBS: 4	72 CLUBS OF 143 ADDED 1 OR MORE NEW MEMBERS	<b>GENDER DISTRIBUTION</b>
<b>DROPPED MEMBERS</b>	<a href="#">CLICK HERE FOR CUMULATIVE MEMBERSHIP DATA</a>	MALE 2,097 (66.44%)
DECEASED 39		FEMALE 1,059 (33.56%)
CLUB CANCELLED 37		NON BINARY 0 (0.00%)
OTHER 239		PREFER NOT TO ANSWER 0 (0.00%)
<b>TOTAL 315</b>		<b>TOTAL FAMILY UNIT MEMBERS 426</b>
		<b>FAMILY MEMBERS PAYING HALF DUES 215</b>